

**DESKTOP ENGRAVER**  
**EGX-30A**

---

A Versatile,  
Creative Tool and  
an Unbeatable Value

- Professional results at an affordable price
- No previous engraving experience required
- Compact size and quiet, safe operation

## Saves Costs and Time of Outsourcing, Creates Additional Value

The fast and quiet EGX-30A is today's most cost-effective, computerized engraving solution, ideal for start-up firms working on a limited budget and any business wishing to eliminate outsourcing.

### Factory worker

With the EGX-30A, you can quickly respond to signage and name plate requests.



### Shop owner

Engrave custom ID tags quickly on demand.



## Roland Dr. Engrave Software Ensures Easy Setup and Operation

Included Dr. Engrave software allows you to start engraving immediately.

### Imports various types of text and bitmap images for vector tracing

- ▶ Supports industry standard True Type fonts
- ▶ Single Stroke Font Editor (SFEEdit) creates original single stroke fonts.

### Imports Microsoft Excel database files in CSV format for variable data applications

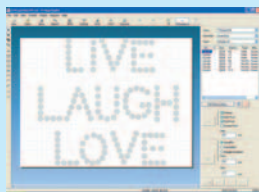
- ▶ Creates name plates using data imported from an address book
- ▶ Sequential numbering function creates serial number plates



## Create one-of-a-kind rhinestone designs with R-Wear Studio™ Optional

With Roland's optional rhinestone design software you can add value to T-shirts, apparel and gifts by following a few simple steps.

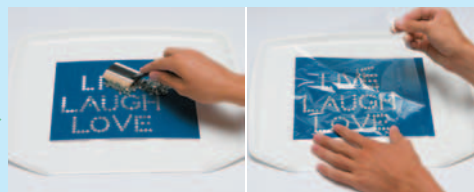
(Combine a Roland printer and plotter for even more variations on your designs.)



**1 Design**  
your rhinestone pattern



**2 Engrave**  
a rhinestone pattern template



**3 Set rhinestones**  
and then transfer the design using transfer tape



**4 Heat press**  
your rhinestone design

### EGX-30A Specifications

Maximum operation area	305 mm (X) × 205 mm (Y) (12 in. × 8-1/16 in.), Maximum thickness workpiece : 5 mm (Z) (3/16 in.)
Feed rate	X, Y-axis: Maximum 3.0 m (118-1/16 in./min.)/min. (50 mm (1-15/16 in.)/sec.)
Spindle motor	Brushless DC motor, maximum 27 W
Engraving tool mounting diameter	3.175 mm (1/8 in.)
Revolution speed	5,000 – 10,000 rpm
Interface	USB (compliant with Universal Serial Bus Specification Revision 1.1), Serial (RS-232C-compliant)
External dimensions	513 mm (W) × 491 mm (D) × 217 mm (H) (20-1/4 in. (W) × 19-3/8 in. (D) × 8-9/16 in. (H))
Weight	13.2 kg (29.1lb.)
Operation temperature	5 to 40 °C (41 to 104 °F)
Operation humidity	35 to 80 % (no condensation)
Engravable materials	Plastic (ABS, Acrylic, PC etc), and Brass and Aluminum for Scribing
Accessories	AC adapter, Power cord, USB cable, Dust collector hose and duct, Character cutter, Engraving-tool holder, Diamond scraper adapter, Hexagonal screw driver, Spanner, Hexagonal wrench, Test material, Adhesive sheet for securing material, Roland Software package CD-ROM, User's manual

### System Requirements for Software

	Dr. Engrave ( Bundled )	R-Wear Studio™ ( Optional )
Operating System	Windows Vista® (32bit version), Windows® XP and 2000	Windows Vista® (32bit version), Windows® XP and 2000

### Options

Item	Model number	Description (Unit = mm)	Item	Model number	Description (Unit = mm)
Engraving cutters	ZEC-A2013	Cemented carbide dia. = 3.175, 114(L) × 0.127(W) (for plastic)	Engraving cutters	ZEC-A2150	Cemented carbide dia. = 3.175, 114(L) × 1.52(W) (Parallel, for plastic)
	ZEC-A2025	Cemented carbide dia. = 3.175, 114(L) × 0.254(W) (for plastic)		ZEC-A2190	Cemented carbide dia. = 3.175, 114(L) × 1.91(W) (Parallel, for plastic)
	ZEC-A2051	Cemented carbide dia. = 3.175, 114(L) × 0.508(W) (for plastic)		ZEC-A2230	Cemented carbide dia. = 3.175, 114(L) × 2.29(W) (Parallel, for plastic)
	ZEC-A2076	Cemented carbide dia. = 3.175, 114(L) × 0.762(W) (for plastic)		ZEC-A2320	Cemented carbide dia. = 3.175, 114(L) × 3.175(W) (Parallel, for plastic)
Quarter round cutters	ZEC-A2013-QR	Cemented carbide dia. = 3.175, 114(L) × 0.13(W) (for plastic)	Diamond cutters	ZDC-A2000	Diamond dia. = 3.175, 127(L)
	ZEC-A2025-QR	Cemented carbide dia. = 3.175, 114(L) × 0.25(W) (for plastic)			

Item	Model number	Description
Bearing for the depth regulator nose	DRN-20	3 pcs.
Adhesive sheet for securing material	AS-10	210mm × 140mm (8-1/4 in. × 5-1/2 in.), 10 sheets

Roland DG products that feature this environmental label meet the company's criteria for environmental consciousness, a set of standards based on ISO 14021 self-declaration type II. For more information, please visit [www.rolanddg.com](http://www.rolanddg.com).



### ISO 14001:2004 and ISO 9001:2000 Certified

Roland pursues both environmental protection and continuous quality improvement. Under the philosophy of preserving the environment and human health, Roland is actively working to abolish organic solvents in production, to reduce and recycle waste, to reduce power use, and to purchase recycled products. Roland constantly strives to provide the most highly reliable products available.



Roland reserves the right to make changes in specifications, materials or accessories without notice. Your actual output may vary. For optimum output quality, periodic maintenance to critical components may be required. Please contact your Roland dealer for details. No guarantee or warranty is implied other than expressly stated. Roland shall not be liable for any incidental or consequential damages, whether foreseeable or not, caused by defects in such products. Three-dimensional shapes may be protected under copyright. Customers are responsible for observing laws and ordinances when scanning. All trademarks are the property of their respective owners.



**AUTHORIZED DEALER:**

Printed in Japan. RDG-416068399 08 DEC F-3 P-S

[www.rolanddg.com](http://www.rolanddg.com)